



# HP EliteBook : The perfect Business Notebook

Now with free docking station

Until 31/12/2014

# Promotion: free docking station with every EliteBook



SKU	Descr	Recomm End user price
F1Q92EA	EliteBook 820 Ultrabook / 12.5" HD AG / i5-4210U / 4GB / 256GB SSD OPAL2 / UMA / Win7 Pro 64 preload & Win8.1 Pro 64 on DVD / 3y wty / webcam / WLAN Intel abgn 2x2 +BT / Backlit keyboard / finger print reader	€ 1 199
J8Q79EA	EliteBook 820 Ultrabook / 12.5" HD AG / i7-4510U / 8GB / 256GB SSD OPAL2 / UMA / Win7 Pro 64 preload & Win8.1 Pro 64 on DVD / 3y wty / webcam / WLAN Intel AC 2x2 +BT / WWAN 4G-LTE with HP Mobile Connect SIM card / Backlit keyboard / finger print reader	€ 1 599
F1Q54EA	EliteBook 840 Ultrabook / 14.0" HD+ AG / i5-4210U / 4GB / 256GB SSD OPAL2 / UMA / Win7 Pro 64 preload & Win8.1 Pro 64 on DVD / 3y wty / webcam / WLAN Intel abgn 2x2 +BT / Backlit keyboard / finger print reader	€ 1 199
F1Q82EA	EliteBook 840 Touch Ultrabook / 14.0" HD+ Touchscreen / i5-4210U / 4GB / 180GB SSD / UMA / Win8.1 Pro 64 / 3y wty / webcam / WLAN Intel abgn 2x2 +BT / Backlit keyboard / finger print reader	€ 1 299
F1Q59EA	EliteBook 850 Ultrabook / 15.6" FHD AG / i5-4210U / 4GB / 256GB SSD OPAL2 / UMA / Win7 Pro 64 preload & Win8.1 Pro 64 on DVD / 3y wty / webcam / WLAN Intel abgn 2x2 +BT / Backlit keyboard / finger print reader	€ 1 199
H5F72EA	EliteBook 850 Ultrathin Notebook / 15.6" FHD AG / i7-4600U vPro / 4GB / 500GB 7200rpm / Radeon HD 8750M 1GB DDR5 / Win7 Pro 64 preload & Win8 Pro 64 on DVD / 3y wty / webcam / WLAN Intel AC 2x2 +BT / WWAN 3G with HP Mobile Connect SIM card / Backlit keyboard / finger print reader	€ 1 450
J8Q75EA	EliteBook 850 Ultrabook / 15.6" FHD AG / i7-4510U / 8GB / 256GB SSD OPAL2 / Radeon HD 8750M 1GB DDR5 / Win7 Pro 64 preload & Win8.1 Pro 64 on DVD / 3y wty / webcam / WLAN Intel abgn 2x2 +BT / WWAN 4G-LTE with HP Mobile Connect SIM card / Backlit keyboard / finger print reader	€ 1 599
F1Q38EA	HP EliteBook 810 Revolve / hybrid notebook / 11.6 HD AG / i5-4210U / 4GB / 180GB SSD / UMA / Win 8.1 Pro 64bit / 3y wty / Webcam / Backlit Keyboard / WLAN Intel AC 2x2 +BT / WWAN 3G with HP Mobile Connect SIM card	€ 1 379
F1N33EA	HP EliteBook 810 Revolve / hybrid notebook / 11.6 HD AG / i7-4600U vPro / 8GB / 256GB SSD / UMA / Win 8.1 Pro 64bit / 3y wty / Webcam / Backlit Keyboard / WLAN Intel AC 2x2 +BT / WWAN 4G LTE with HP Mobile Connect SIM card	€ 1 899
J8R48EA	EliteBook 1040 G1 / 14 HD+ AG / i5-4210U / 8GB / 180GB SSD / Win7 Pro 64 preload & Win8.1 Pro 64 on DVD / 3y wty / Webcam / WLAN Intel AC 2x2 +BT / Duo-Dongle RJ45 and VGA / Backlit Keyboard / NFC	€ 1 475
H5F67EA	EliteBook 1040 G1 / 14 FHD AG / i7-4600U vPro / 8GB / 256GB SSD / Win7 Pro 64 preload & Win8.1 Pro 64 on DVD / 3y wty / Webcam / WLAN Intel AC 2x2 +BT / WWAN 4G-LTE with HP Mobile Connect SIM Card / Duo-Dongle RJ45 and VGA / Backlit Keyboard / NFC	€ 1 999



# HP EliteBook 800 G1 series

Today's mobility is tomorrow's mainstream



The HP Elitebook 800 notebooks are ultra-productive in and out of the office thanks to enterprise security, performance and management features.

## Key Selling Points

- 1. Mainstream Mobility** - Upgrade to first-class mobility and premium reliability with the thinner, lighter HP EliteBook 800.
- 2. Enterprise-class Manageability & Security** - Get full manageability and security tools designed to keep your business going.
- 3. Premium reliability** - Never accidental fear bumps on these durable notebooks.

## Key Accessories



HP Ultralim Dock



Display and Notebook Stands



HP EliteDisplay



Professional, Business & Essential Series

## Key Features

- Embedded TPM 1.2
- UltraSlim Side Docking
- LTE WWAN module (4G)
- HP Sure Start self-healing BIOS
- LED-backlit HD or FHD display
- Optional Touch

## Key Software

- HP Client Security
- HP Trust Circles
- HP Wireless Hotspot
- HP Client Management



### Mobility

Thin & Light design (starting at 2.1cm and 1.33 kg)  
+18h of battery life (14" with 2<sup>nd</sup> battery)



### Performance

Intel 4th Gen Core processors  
Switchable graphics  
Flash cache & M.2 SSD



### Manageability

Global availability, 18-month platform stability, optional Intel vPro support, Tool-less serviceability.



### Durability

MIL-STD 810G testing, Magnesium and aluminum chassis, HP Total Test Process, Spill-resistant mylar film, HP 3D DriveGuard



# HP EliteBook Revolve 810 G2

## The best of both worlds



Work doesn't always adapt to you. So we HP designed an EliteBook that does. It's an ultra-thin notebook that rotates to become a tablet. Bend over backwards to get more done.

### Key Selling Points

- 1. Ultra Mobility & Flexibility** - Enjoy mobile freedom with a thin and light design without sacrificing performance.
- 2. Maximum Security & Fully Manageable** - Security and manageability tools for enterprise and SMB that ease the burden on IT including HP Sure Start.
- 3. Enterprise IT-ready** - Torture tested to ensure dependable productivity in even the most demanding business environments

### Key Accessories



Ultraslim Dock



Display port to  
VGA adapter



HP Stylish Wireless  
KB/Mouse



HP Business Slim Top  
Load Case

### Key Features

- 11.6" display, Capacitive multitouch screen with digitizer
- Full size backlit keyboard
- Enterprise-class docking
- HP Sure Start technology

### Key Software

- HP BIOSphere
- HP Trust Circles
- HP Client Management Solutions
- HP Wireless Hotspot



#### Mobility

22mm thin  
Starting at 1.4kg  
Up to 10h45 of battery life



#### Performance

Intel 4th Gen Core  
processors  
256GB SED M.2 SSD



#### Manageability

Optional LANDesk  
management tools, Optional  
Intel vPro support



#### Connectivity

Optional 3G and 4G/LTE  
integrated WWAN, NFC



#### Security

Certified TPM 1.2  
Optional fingerprint  
reader



#### Durability

MIL-STD 810G tested  
HP's Total Test Process



# HP EliteBook Folio 1040 G1

## Everything a business Ultrabook should be



The elegantly designed HP EliteBook Folio 1040 G1 meets enterprise needs in terms of security, performance and manageability without sacrificing mobility.

### Key Selling Points

- 1. Advanced & Durable design** – At just 15.9mm thin this Ultrabook offers best-in-class durability and mobility.
- 2. Manageability & Security** – HP takes security and manageability to a new level with professional innovations.
- 3. Productive powerhouse** – Keep productive in the office or on the go with leading-edge technology options.

### Key Accessories



**HP Ultralim Docking Station**



**HP Dock Connector to Ethernet and VGA**



**HP EliteDisplay**



**HP Stylish Wireless KB/Mouse**

### Key Features

- Up to 4<sup>th</sup> generation Intel Dual-Core i7 processors
- Up to full HD display, optional Touch
- HP unique ForcePad
- Standard backlit keyboard

### Key Software

- HP Client Security
- HP Trust Circles
- HP Drive Encryption
- HP Mobile Connect



#### Mobility

CNC Aluminum Chassis  
15.9mm and 3.3 lb. / 1.49 kg  
Up to 10 hours of battery life



#### Manageability

HP Client Management Solutions, LANDesk, Intel vPro, Global Series support, long lifecycle transitions



#### Connectivity

4G / LTE WWAN  
Optional NFC



#### Premium Security

Smart Card Reader,  
Security cable slot



#### Durability

12 MIL-STD 810G passed  
HP's Total Test Process



# HP EliteBook 800 Series

## Mainstream Mobility for Enterprise



Maximize productivity with technology that delivers **superior performance**



Durable construction in a **thin and light design** provides portability



Easily **connect and gain access** with built-in ports and configurable options



Protect device, data and identity with HP's industry leading **security and manageability tools**

# HP EliteBook 800 Series

## Superior Performance

**Processor:** Latest 4<sup>th</sup> Generation Intel® Core™ i3/i5/i7

**Display:** 12.5"/14"/15.6" – Up to FHD (1920 x 1080) with optional touch

**Memory:** Up to 16GB

**Storage:** Up to 1 TB HDD or 512GB SSD, or combination of HDD and SSD

**Graphics:** Intel® HD Graphics or optional Discrete Graphics Card

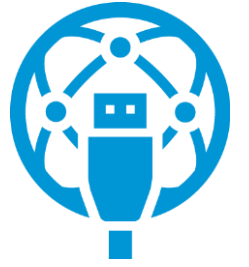
**Battery Life:** 18+ hours with Optional Slice Battery (14.0" only)





# HP EliteBook 800 Series

## Convenient Connectivity



### No Dongles Needed with Built-In:

- VGA
- DisplayPort 1.2
- RJ-45
- Enterprise Docking Connector

### Easily Connect Using:

- HP Connection Manager
- HP Wireless Hotspot
- HP Mobile Connect (EMEA)

### Go Wireless:

- Bluetooth
- Multiple options for high-performance WiFi & WWAN





# HP EliteBook 800 Series

Thin and light, elegantly styled design



## 2014 Design

- Up to 40% thinner and 28% lighter than 2012 models
- Magnesium and aluminum chassis
- Luxurious 4-layer, soft-touch finish
- HP DuraKeys
- HP DisplaySafe Frame

## Passes 10 Military Test (MIL-STD 810G) standards

- **Drop from table height** and functional shock
- Thermal shock and temperature variations
- Humidity and spills
- Pressure and altitude
- Dust tolerance
- Vibration

## HP Total Test Process

- 115 000 hours of testing & 50 000 individual test steps



# HP EliteBook 800 Series



## Integrated Security & Manageability

### Security

- Self-Healing BIOS
- HP Client Security
- TPM 1.2
- Security Lock Slot
- Fingerprint Reader
- Self-Encrypting Drives

### Manageability

- Global Series Offering
- Long life-cycles and transition cycles
- HP Client Management Solutions
- Intel vPro & LANDesk (optional)

